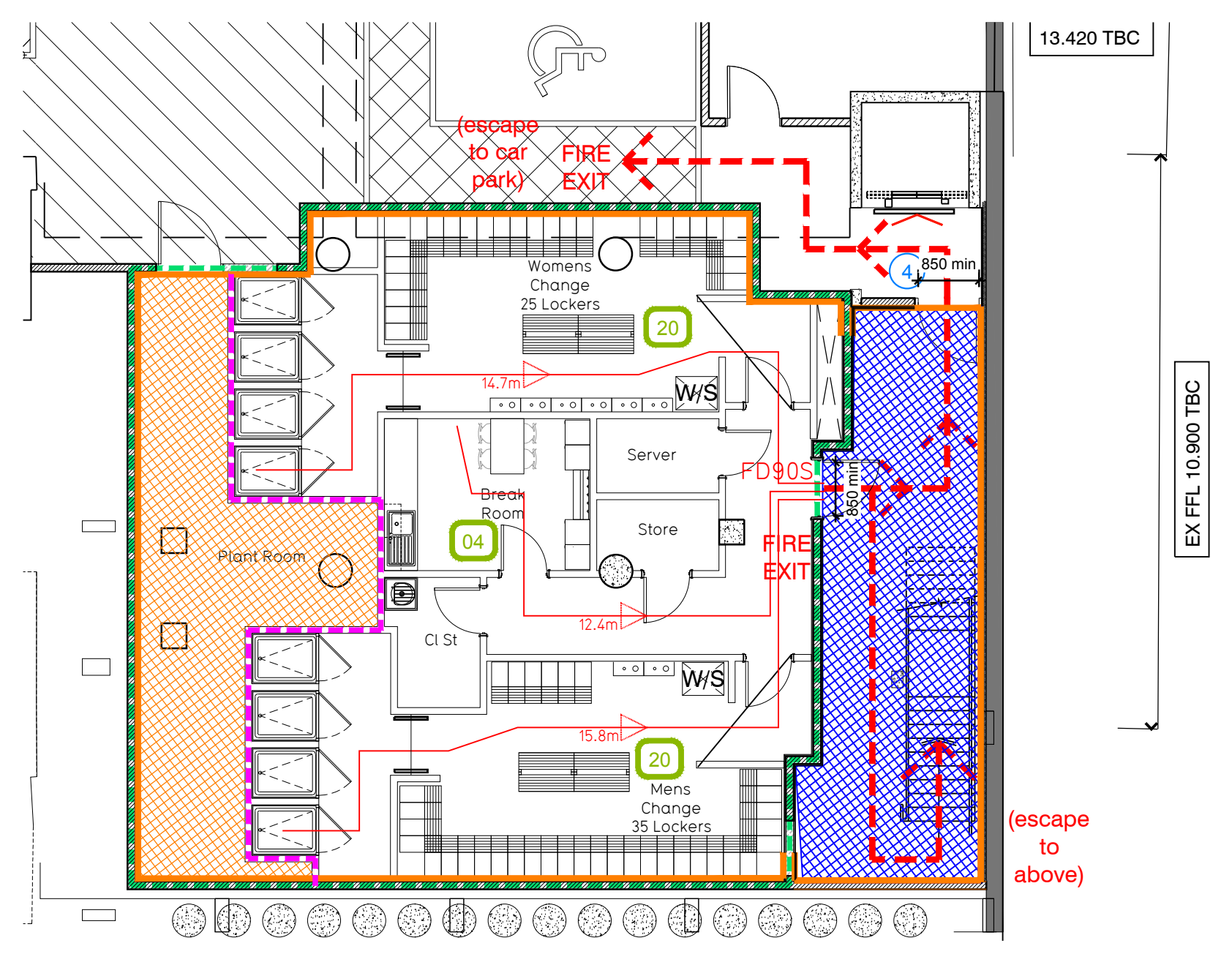


Proposed Ground Floor Plan (Scale 1:100)



Proposed Basement Floor Plan (Scale 1:100)

Fire Evacuation Key

- Existing wall to achieve min 90 minute fire rating (suitability of wall to be confirmed on site by Pure Gym Main Contractor)
- New wall to achieve min of 60min fire rating
- Protected areas: walls, floors, ceilings and doors to achieve 30minute fire resistant construction.
- Protected areas: walls, floors, ceilings and doors to achieve 60 minute fire resistant construction.
- 30 Occupancy level within area
- Fire Escape Route
- Minimum Clear Widths
- 0 Exit No.
- Protected Escape Route

Escape Route Widths
 In line with Sections 3.21 & 3.22 of 'Approved Document Part B, Volume 2 - buildings other than dwellinghouses' - the adjacent calculations provide justification for the clear opening widths for escape from each floor level/ room in accordance with Table 4 & Appendix C.

Ground Floor
 Exit 1 Min Clear Opening Width = 1050mm (allows 220 persons to escape)
 Exit 2 Min Clear Opening Width = 1050mm (largest opening to be discounted)
 Total Aggregate Width for Floor (Less Largest Opening Width of 1050mm from Exit 2) = 1050mm
 Ground Floor Total Estimated Occupancy Capacity = 109 Persons
 Exit 1 provides a min. width of 1050mm and would allow a max. No. of 220 persons to escape, which is larger than the total estimated occupancy capacity of 109 Persons and is therefore thought to meet with the Approved Document Part B.

Basement Floor
 Exit 3 Min Clear Opening Width = 850mm (allows 110 persons to escape)
 Exit 4 Min Clear Opening Width = 850mm (largest opening to be discounted)
 Total Aggregate Width for Floor (Less Largest Opening Width of 1100mm from Exit 2) = 850mm
 Basement Floor Total Estimated Occupancy Capacity = 44 Persons
 Exit 3 provides a min. width of 850mm and would allow a max. No. of 110 persons to escape, which is larger than the basement estimated occupancy capacity of 44 Persons and is therefore thought to meet with the Approved Document Part B.

Fire Alarm
 Fire Alarm designed and installed to BS 5839. Smoke & heat detection / emergency lighting by specialist. Please refer to M&E engineer's drawings / specifications.

Escape Lighting
 Emergency escape lighting designed and installed in accordance with BS 5266: Part 1. Please refer to M&E Engineer's drawings for final layout and specification.

Rev	Date	Description	DRAWING TITLE
			Whitechapel Road Whitechapel, London, E1 1JG
			Fire Evacuation Plan Ground & Basement Floor Plan
			IR / GL
			26.09.18
			1:100@A1 / 1:200@A3 IA-MBF-001
			XX-003-FEP
			CONSTRUCTION

Pure Gym Ltd
 Town Centre House
 The Merrion Centre
 Leeds
 LS2 8LY
 e: architecture@puregym.com
 t: 0113 285 8787
 w: www.puregym.com