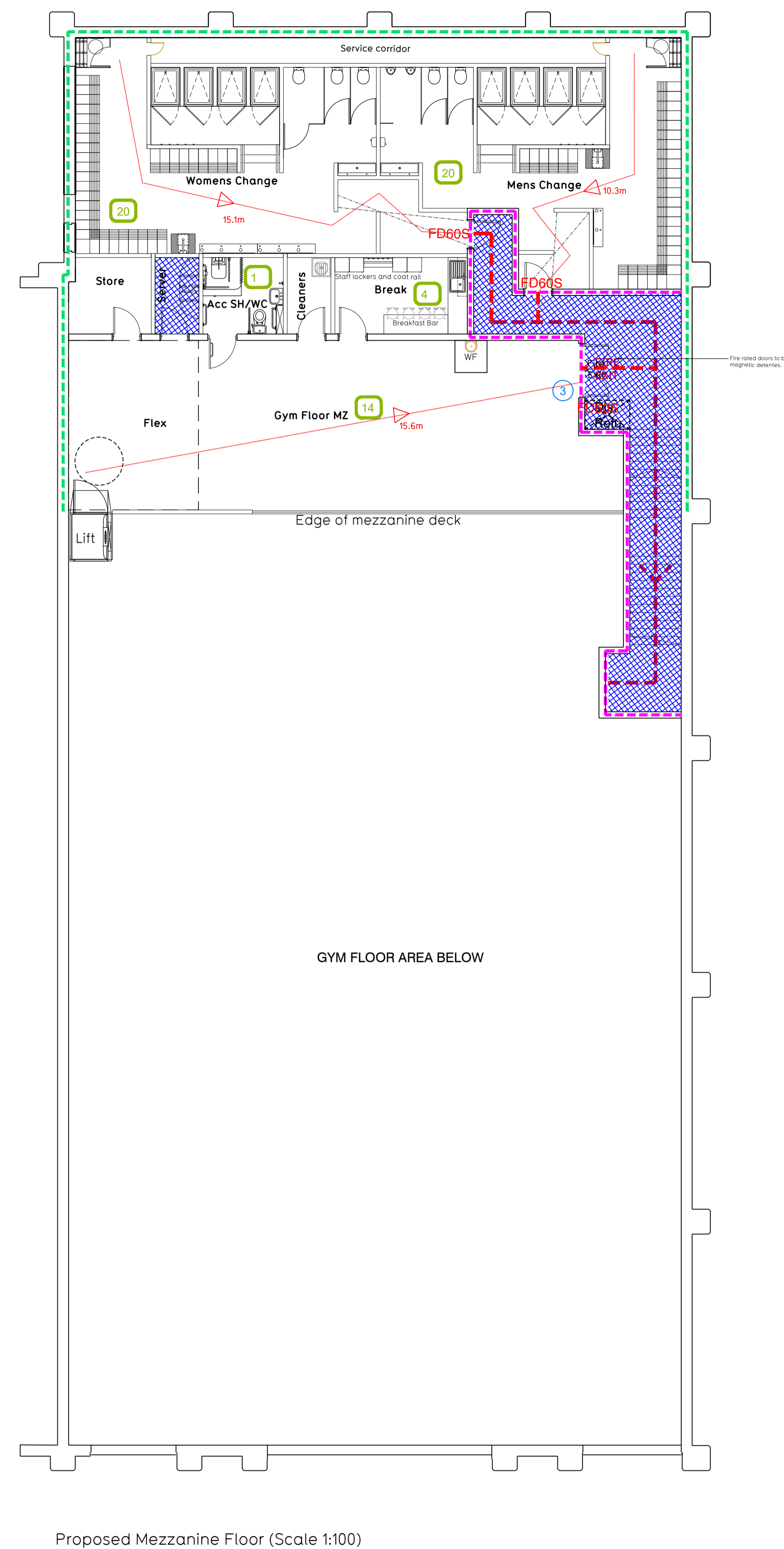
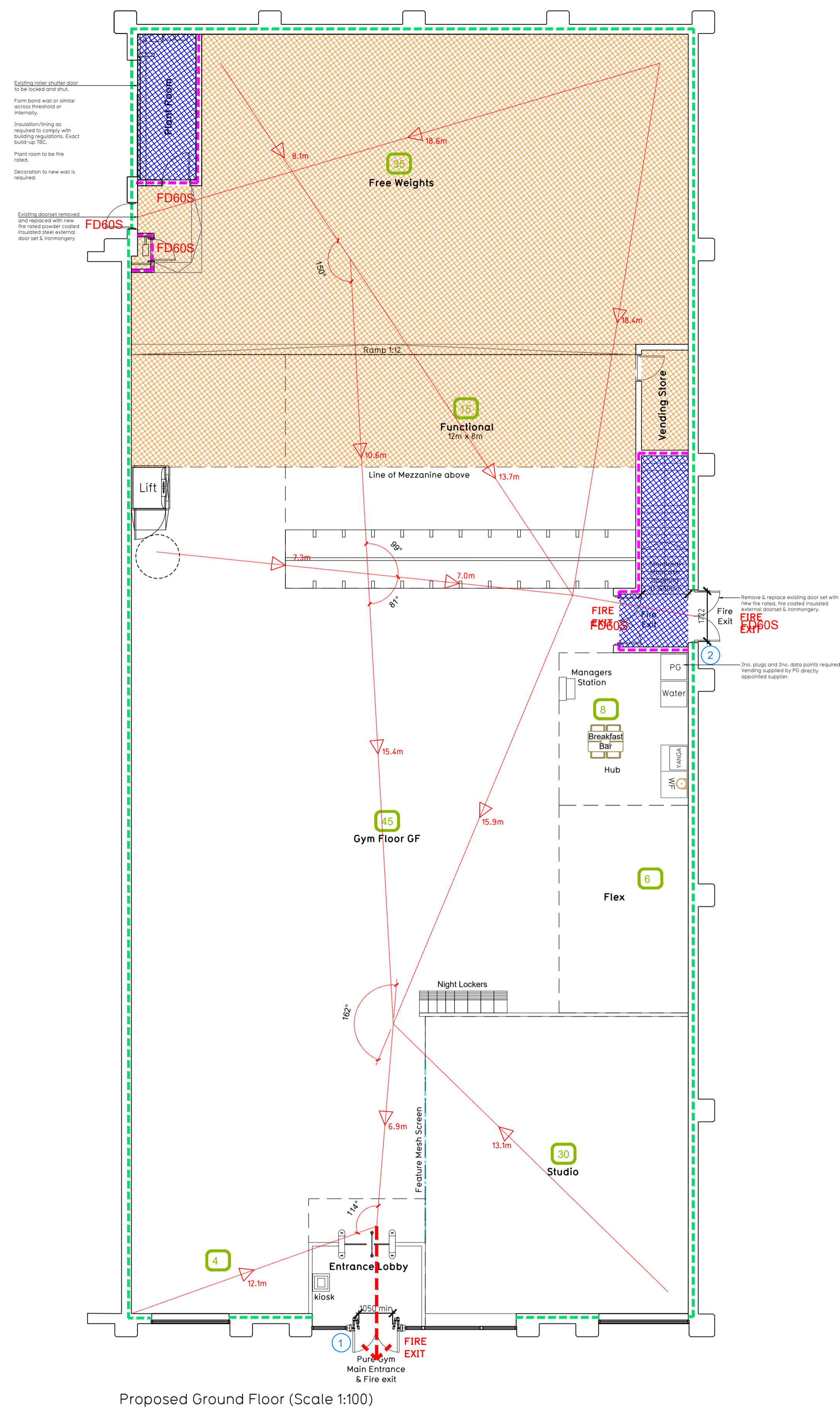
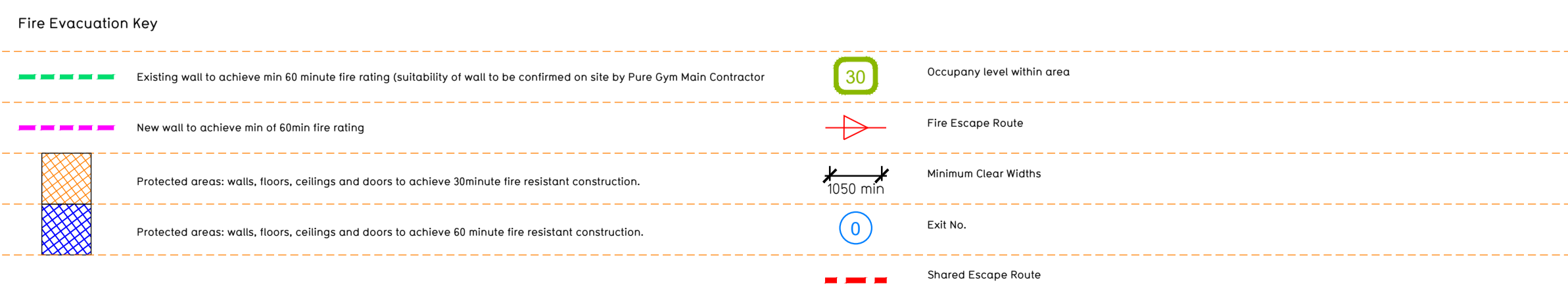


- Proposals must comply with all acoustic, fire & building regulation requirements
- No dimensions are to be scaled from this drawing. The contractor is responsible for checking all dimensions on site
- To be read in conjunction with the Burgess Hill Site notes enclosed



Proposed Ground Floor (Scale 1:100)

Proposed Mezzanine Floor (Scale 1:100)



Escape Route Widths:
 In line with Sections 3.21 & 3.22 of Approved Document Part B, Volume 2 - buildings other than dwellings - the adjacent calculations provide justification for the clear opening widths for escape from each floor level/ room in accordance with Table 4.8 Appendix C.

Ground Floor
 Exit 1 Clear Opening Width = 850mm (allows 10 persons to escape)
 Exit 2 Clear Opening Width = 1000mm (largest opening to be discounted)
 Total Aggregate Width for Floor (Less Largest Opening Width of 1000mm from Exit 2) = 850mm
 Ground Floor Total Estimated Occupancy Capacity = 107 Persons
 Exit 1 provides a min. width of 850mm and would allow a max. No. of 10 persons to escape, which is larger than the total estimated occupancy capacity of 107 Persons and is therefore thought to meet with the Approved Document Part B.

Mezzanine Floor
 Exit 3 Clear Opening Width = 1400mm (allows 220 persons to escape)
 Exit 3 provides a min. width of 1400mm and would allow a max. No. of 110 persons to escape, which is larger than the total estimated occupancy capacity of 54 persons and is therefore thought to meet with the Approved Document Part B.

Sprinklers
 System design and installed in compliance with BS EN 12845:2015 & LPC Technical Bulletins

Fire Alarm
 Fire Alarm designed and installed to BS 5839. Smoke & heat detection / emergency lighting by specialist. Please refer to M&E engineer's drawings / specifications.

Escape Lighting
 Emergency escape lighting designed and installed in accordance with BS 5266: Part 1. Please refer to M&E Engineer's drawings for final layout and specification.

Smoke Extract
 Smoke Extract System to be designed and installed in accordance with BS 7346: Part 8. Please refer to M&E Engineer's drawings for final layout and specification.

Rev	Date	Description	Drawn/ Checked
B	18.09.19	Revert to original layout	CS/PG
A	13.09.19	Additional Escape Stair Added To Mezzanine	CS/PG

PROJECT TITLE		DRAWING TITLE	
Burgess Hill Unit 2, London Road Retail Park, West Sussex, RH15 9RD		Fire Evacuation Plan Ground and Mezzanine Floor Plans	
DESIGN / CHECKED	DATE	SCALE	ISSUE NO.
SS/PG	02.08.19	1:100 @ A1	009
DRAWING PURPOSE			
CONSTRUCTION			B

Pure Gym Ltd
 Town Centre House
 The Merriem Centre
 Leeds
 LS2 8LY
 e: architecture@puregym.com
 t: 0113 285 8787
 w: www.puregym.com