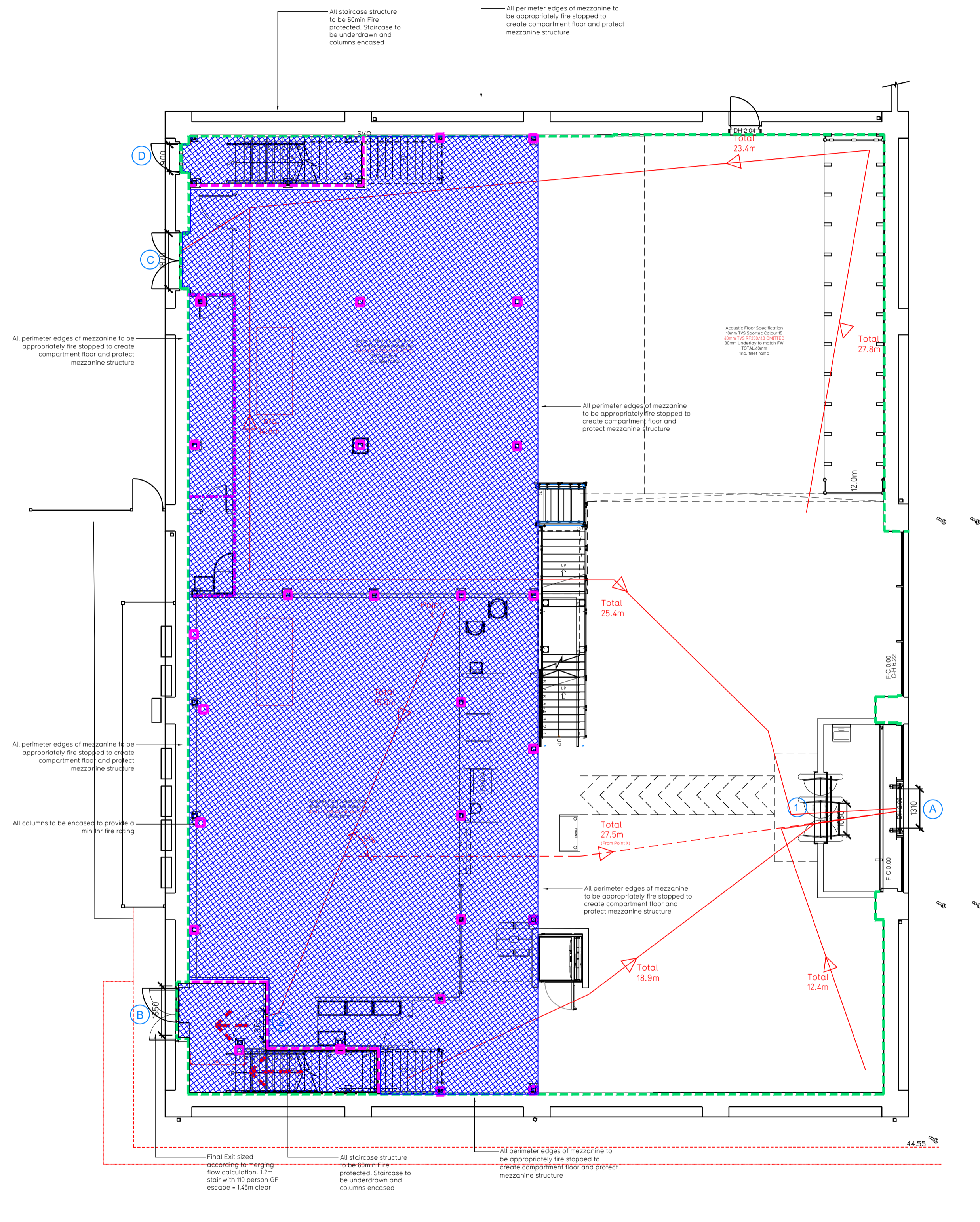
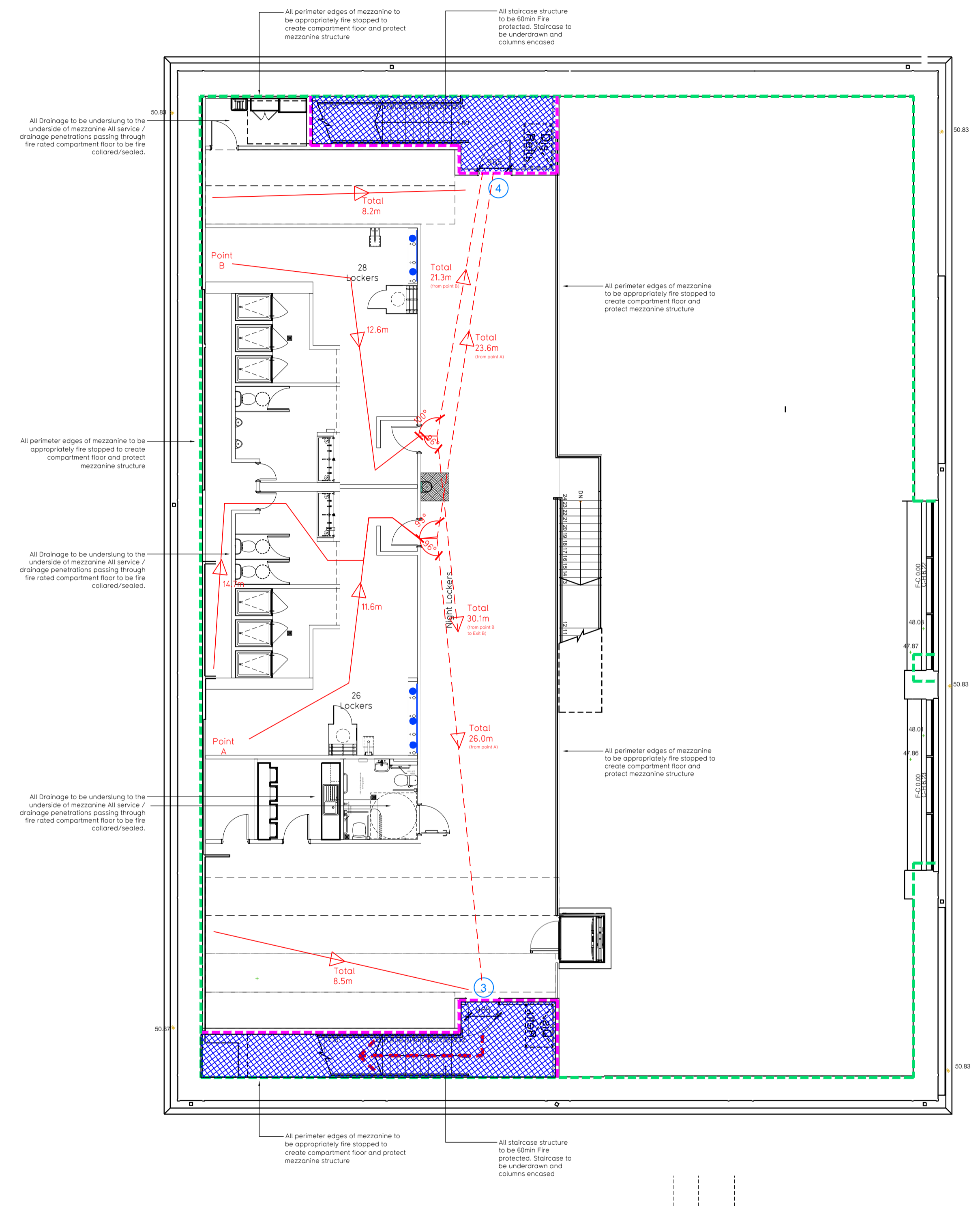


NOTE:

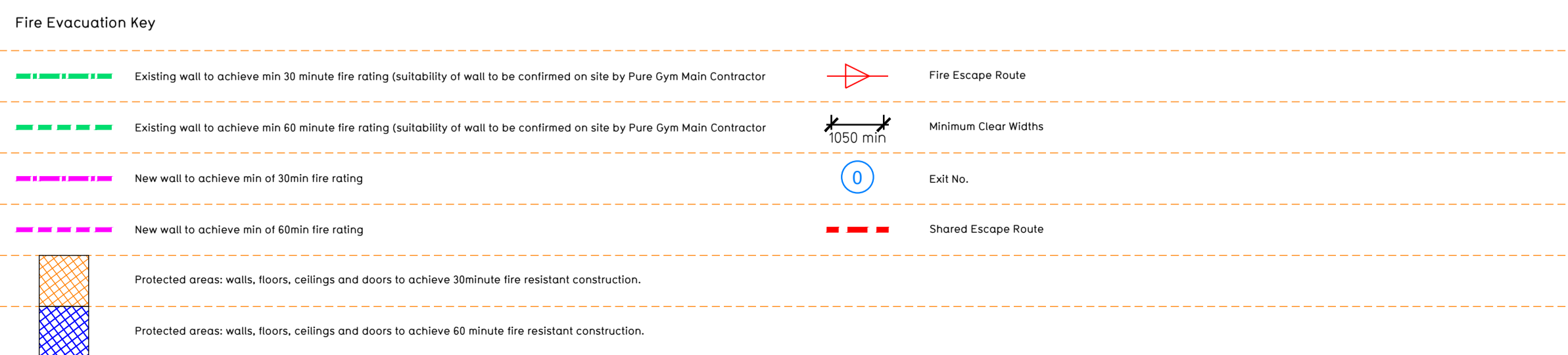
- Proposals must comply with all acoustic, fire & building regulation requirements
- No dimensions are to be scaled from this drawing. The contractor is responsible for checking all dimensions on site



Proposed Ground Floor Plan



Proposed Mezzanine Floor Plan



**Escape Route Widths:**  
 In line with Sections 3.21 & 3.22 of 'Approved Document Part B, Volume 2 - buildings other than dwellings' - the adjacent calculations provide justification for the clear opening widths for escape from each floor level/ room in accordance with Table 4 & Appendix C.

**Ground Floor**  
 Exit 1 Clear Opening Width = 1050mm (allows 222 persons to escape)  
 Exit 2 Clear Opening Width = 965mm (allows 110 persons to escape)  
 Exit C Clear Opening Width = 1950mm (allows 400 persons to escape, largest opening to be discounted)

Exit 1 and 2 (Less Largest Opening Width of 1950mm from FINAL EXIT C) provides a combined escape capacity of 332 persons, which is larger than the total estimated occupancy capacity of 194 Persons and is therefore thought to meet with the Approved Document Part B.

**Mezzanine Floor**  
 Final Exit B Fed by Storey Exit 3. Clear Opening Width = 965mm (allows 110 persons to escape)  
 Final Exit D Fed by Storey Exit 4. Clear Opening Width = 965mm (allows 110 persons to escape)  
 (largest opening to be discounted)

Total Aggregate Width for Floor (Less Largest Opening Width of 965mm from STOREY EXIT 3) = 965mm

**Total**  
 Ground Floor = 332 persons to escape  
 Mezzanine Floor = 110 persons to escape  
 Total = 442 persons to escape

Based on a NA of 11,998sqft, the Puregym peak Occupancy Target = 194 Persons  
 Calculated using Puregym Fire Safety Occupancy Levels Forecast Tool

The designed occupancy of the unit as calculated would allow a max. No. of 442 persons to escape, which is larger than the total estimated occupancy capacity of 194 persons and is therefore thought to meet with the Approved Document Part B. To allow free movement between the floors the occupancy has not been split 50/50% but rather allows for occupancy based on gym stations and functions assuming that a high percentage of the total occupancy could be on a single floor at one time.

**Fire Alarm**  
 Fire Alarm designed and installed to BS 5839. Smoke & heat detection / emergency lighting by specialist. Please refer to MSE engineer's drawings / specifications.

**Escape Lighting**  
 Emergency escape lighted designed and installed in accordance with BS 5266: Part 1. Please refer to MSE Engineer's drawings for final layout and specification.

**Mezzanine Design CDP:** New mezzanine structure including deck and column connections to be 60min FR using a boarded solution. Ceiling to be clear and flat ready to receive decoration. Service penetrations to be coordinated and suitably fire stopped. Contractor to submit proposals for design to be reviewed by building control and fire service. Escape Signage and emergency lighting to CDP under the MSE specification. Details of contractors proposals to be provided to Building Control Approved Inspector and Fire Officer within the Contractors Proposals Package, Clause 14.

Rev	Date	Description	Drawn/Checked
00			

<b>Trowbridge</b> Unit S5, Spirefire RP, Trowbridge, BA14 0AZ		<b>Fire Evacuation Plan</b> Ground and Mezzanine Floor Plans	
DRAWN/CHECKED MJ/JCS	DATE 12.05.22	SCALE 1:100 @ A1	DRAWING No. 003-FEP
<b>CONSTRUCTION</b>			Rev 000

Pure Gym Ltd  
 Town Centre House  
 The Merrion Centre  
 Leeds  
 LS2 8LY  
 e: architecture@puregym.com  
 t: 0113 285 8787  
 w: www.puregym.com