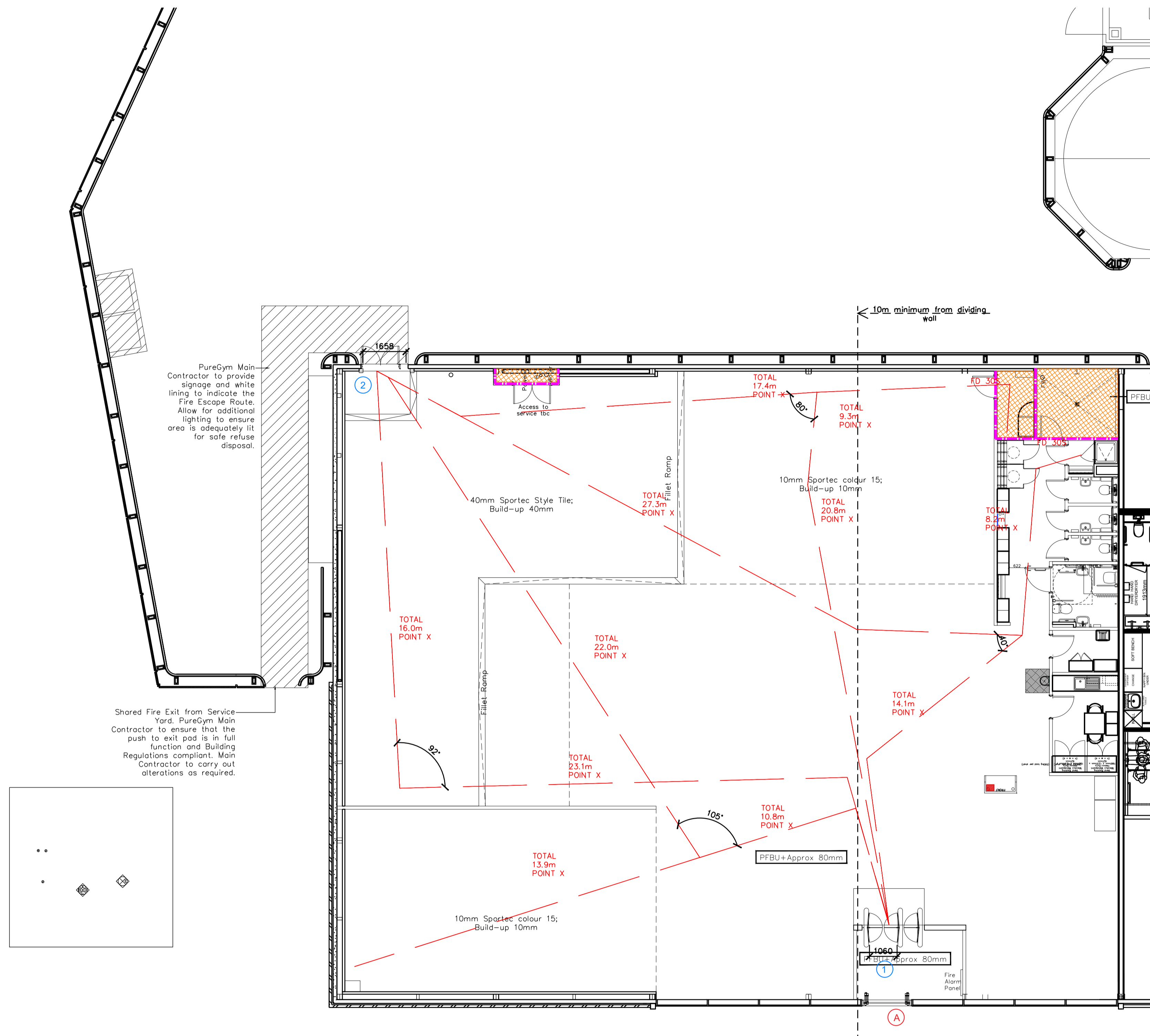
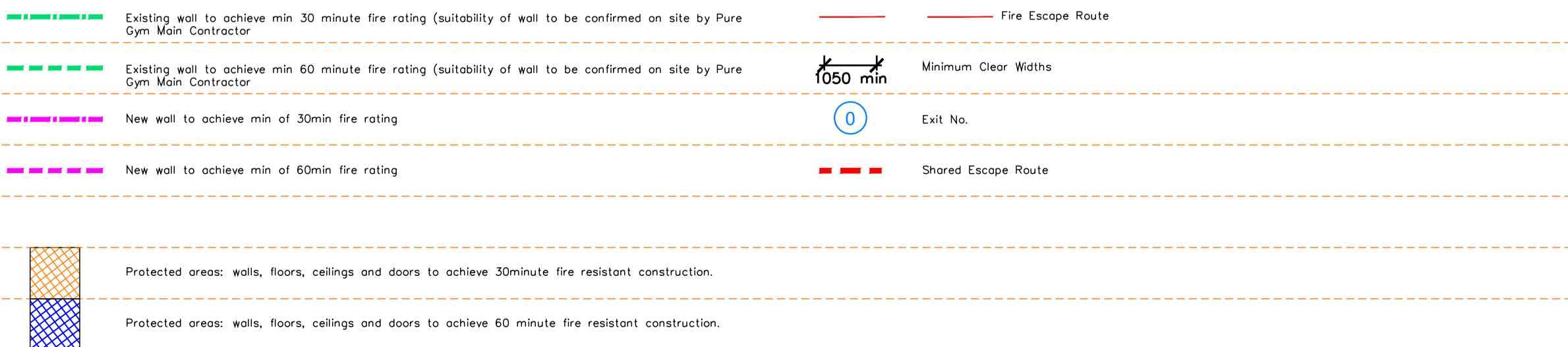


NOTE:

- Proposals must comply with all acoustic, fire & building regulation requirements
- No dimensions are to be scaled from this drawing. The contractor is responsible for checking all dimensions on site



Fire Evacuation Key



**Escape Route Widths:**  
 In line with Sections 3.21 & 3.22 of 'Approved Document Part B, Volume 2 – buildings other than dwellings' – the adjacent calculations provide justification for the clear opening widths for escape from each floor level/ room in accordance with Table 4 & Appendix C.

**Ground Floor:**  
 Exit 1 Clear Opening Width = 1060mm (allows 222 persons to escape)  
 Exit 2 Clear Opening Width = 1658mm (allows 34 persons to escape, largest opening to be discounted)  
 Total Aggregate Width for Floor (Less Largest Opening Width of 1658mm from EXIT NO.2) = 1060mm  
 Ground Floor Total Estimated Occupancy Capacity = 50 Persons

**EXIT NO.1** provides a min. width of 1060mm and would allow a max. No. of 222 persons to escape, which is larger than the total estimated occupancy capacity of 100 Persons and is therefore thought to meet with the Approved Document Part B.

**Sprinklers (NOT REQUIRED)**  
 System design and installed in compliance with BS EN 12845:2015 & LPC Technical Bulletins

**Fire Alarm:**  
 Fire Alarm designed and installed to BS 5839. Smoke & heat detection / emergency lighting by specialist. Please refer to M&E engineer's drawings / specifications.

**Escape Lighting:**  
 Emergency escape lighting designed and installed in accordance with BS 5266: Part 1. Please refer to M&E Engineer's drawings for final layout and specification.

**Smoke Extract (NOT REQUIRED)**  
 Smoke Extract System to be designed and installed in accordance with BS 7346: Part B. Please refer to M&E Engineer's drawings for final layout and specification.

Escape Signage and emergency lighting is CDP under the M&E specification. Details of contractors proposals to be provided to Building Control Approved Inspector and Fire Officer within the Contractors Proposals Package, Clause 1.4

Refer to Landlord's Fire Escape Strategy Document: '215 – Adjacent Retail Units – Fire Strategy.'

COO 14.12.22 Construction Issue		CV
Rev	Date	Description
PROJECT TITLE		DRAWING TITLE
St Ives Harrison Way Cambridgeshire PE27 4NB		Fire Evacuation Plan Ground Floor Plans
DRAWN/CHECKED	DATE	SCALE
SKVCV	06.09.22	1:100 @ A1
DRAWING No.	REV No.	DRAWING No.
003-FEP		
DRAWING PURPOSE		Rev
CONSTRUCTION		C00

Pure Gym Ltd  
 Town Centre House  
 The Merrion Centre  
 Leeds  
 LS2 9LY  
 e: architecture@puregym.com  
 t: 0113 285 8787  
 w: www.puregym.com