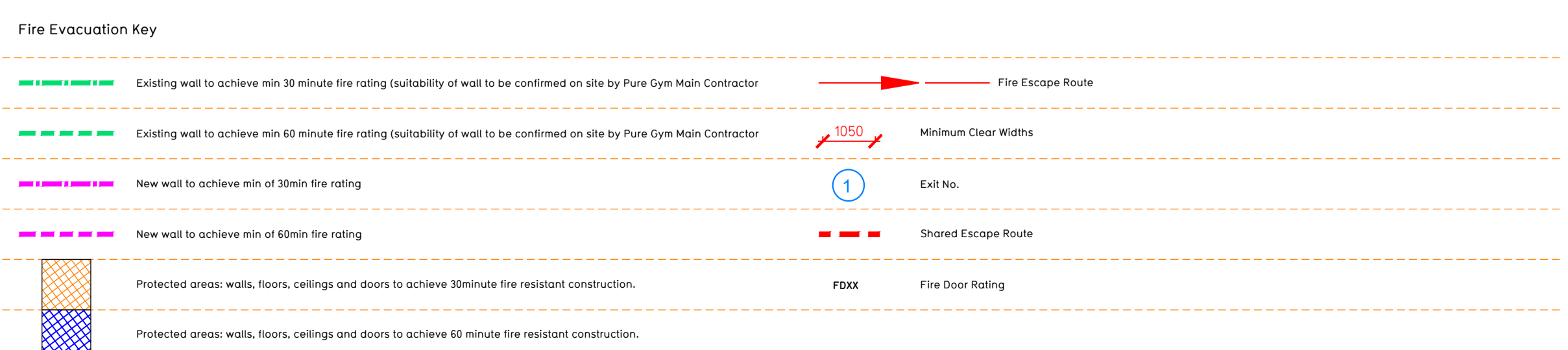
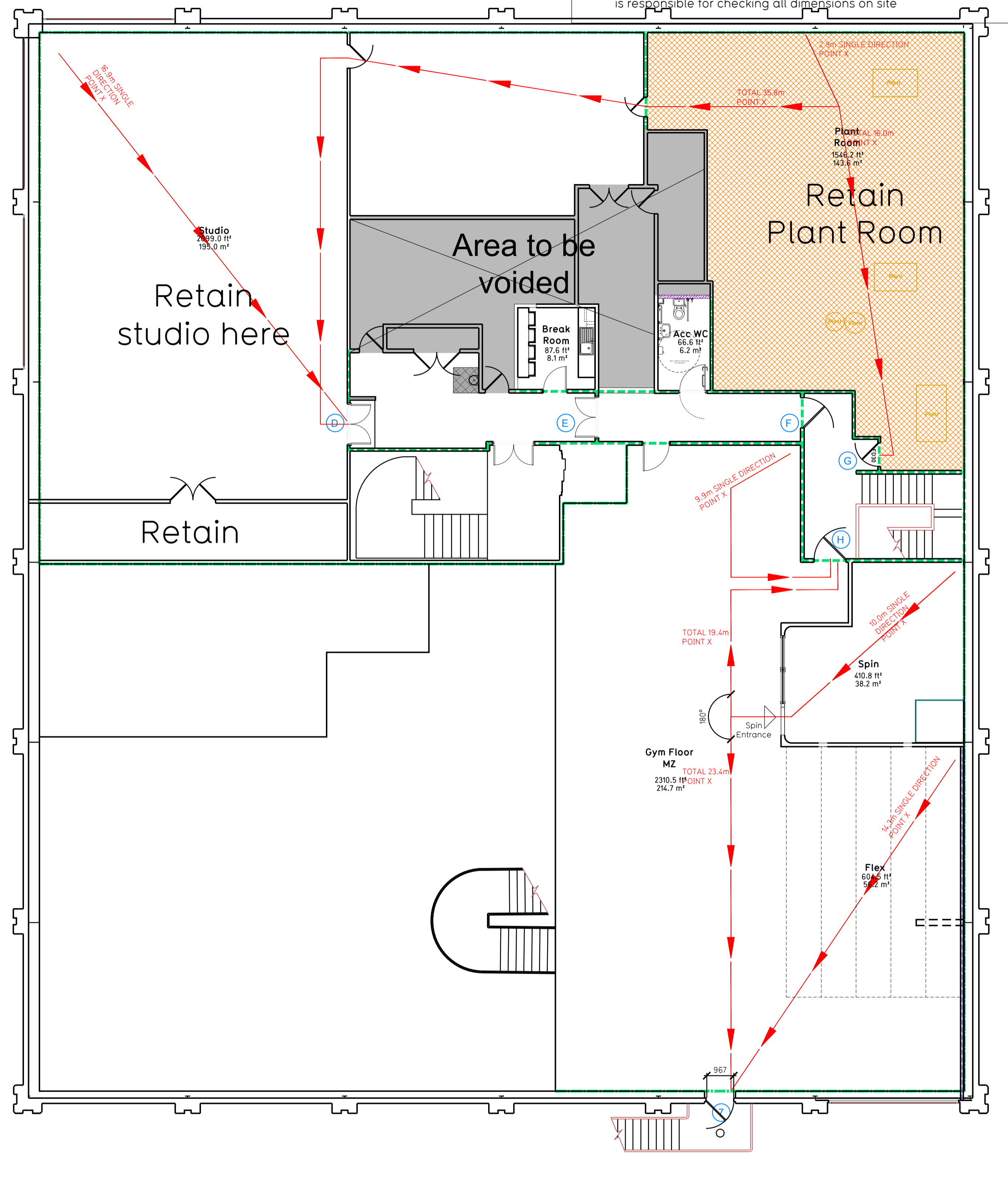
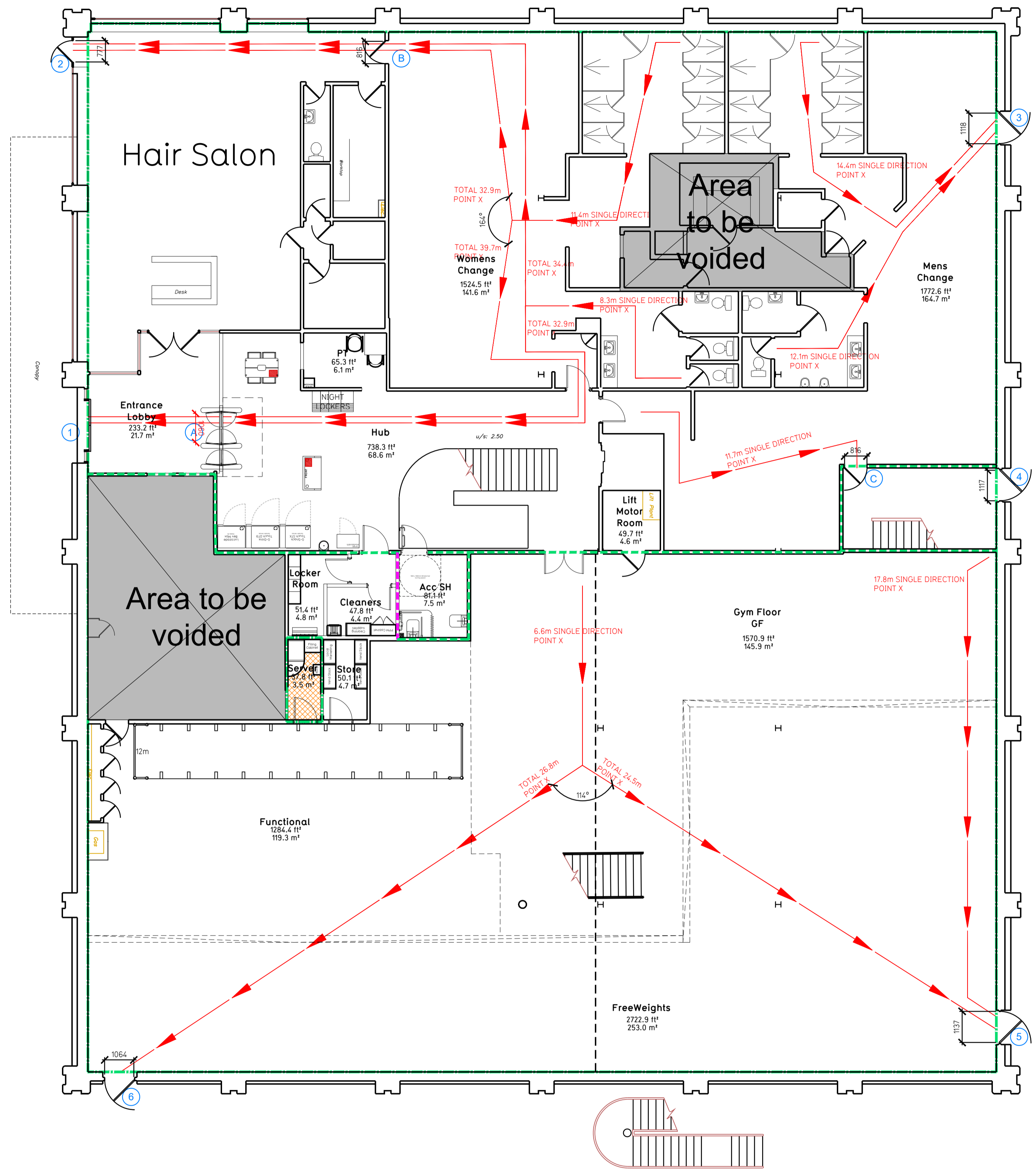


NOTE:

- Proposals must comply with all acoustic, fire & building regulation requirements
- No dimensions are to be scaled from this drawing. The contractor is responsible for checking all dimensions on site



**Escape Route Widths:**  
 In line with Sections 3.21 & 3.22 of 'Approved Document Part B, Volume 2 - buildings other than dwelling houses' - the adjacent calculations provide justification for the clear opening widths for escape from each floor/room in accordance with Table 4.4 Appendix C.

**Ground Floor:**  
 Exit 1a restricted by A. Exit Clear Opening Width = 1900mm (allows 222 persons to escape)  
 Exit 2 Clear Opening Width = 770mm (allows 60 persons to escape)  
 Exit 3 Clear Opening Width = 1180mm (allows 231 persons to escape, largest opening to be discounted)  
 Exit 4 Clear Opening Width = 1170mm (allows 231 persons to escape)  
 Exit 5a restricted by C. Exit Clear Opening Width = 816mm (allows 60 persons to escape)  
 Exit 5b Clear Opening Width = 1040mm (allows 232 persons to escape)  
 Total Aggregate Width for Floor (Less Largest Opening Width of 1180mm from Exit 3 = 4834mm)  
**Mezzanine/First Floor:**  
 Exit 4 Clear Opening Width = 1170mm (allows 231 persons to escape)  
 Exit 7 Clear Opening Width = 967mm (allows 110 persons to escape)  
**Total:**  
 Ground Floor = 797  
 Mezzanine Floor = 343  
**Total = 1140 persons to escape**

Based on a NIA of 18922 sqft, the Puregym Peak Occupancy Target = 355 Persons  
 Calculated using Puregym Fire Safety Occupancy Levels Forecast Tool.  
 The designed occupancy of the unit as calculated below would allow a max. No. of 1140 persons to escape, which is larger than the total estimated occupancy capacity of 355 Persons and is therefore thought to meet with the Approved Document Part B.

**Sprinklers**  
 System designed and installed in compliance with BS EN 12845:2015 & LPC Technical Bulletins

**Fire Alarm**  
 Fire Alarm designed and installed to BS 5839. Smoke & heat detection / emergency lighting by specialist. Please refer to MSE engineer's drawings / specifications.

**Escape Lighting**  
 Emergency escape lighting designed and installed in accordance with BS 5266: Part 1. Please refer to MSE Engineer's drawings for final layout and specification.

**Smoke Extract**  
 Smoke Extract System to be designed and installed in accordance with BS 7346: Part 8. Please refer to MSE Engineer's drawings for final layout and specification.

Escape Signage and emergency lighting is CDP under the MSE specification. Details of contractors proposals to be provided to Building Control Approved Inspector and Fire Officer within the Contractors Proposals Package, Clause 14.

Rev	Date	Description	Drawn/Checked
C01	16.05.25	Locker/Cleaner Room access door moved 100mm	SKU/JM

<b>PROJECT TITLE</b>		<b>DRAWING TITLE</b>	
Sheffield Crystal Peaks Drake House Way, Beighton, Sheffield S20 7JJ		Fire Evacuation Plan Ground and First Floor Plans	
<b>DRAWING NO.</b>	<b>DATE</b>	<b>SCALE</b>	<b>DRAWING No.</b>
003-FEP	13.04.23	1:100 @ A1	003-FEP
<b>DRAWING PURPOSE</b>	<b>SCALE</b>	<b>NO.</b>	<b>Rev</b>
CONSTRUCTION			C01

**PUREGYM**

Pure Gym Ltd  
 Town Centre House  
 The Merrion Centre  
 Leeds  
 LS2 8LY

e: architecture@puregym.com  
 t: 0113 285 8787  
 w: www.puregym.com