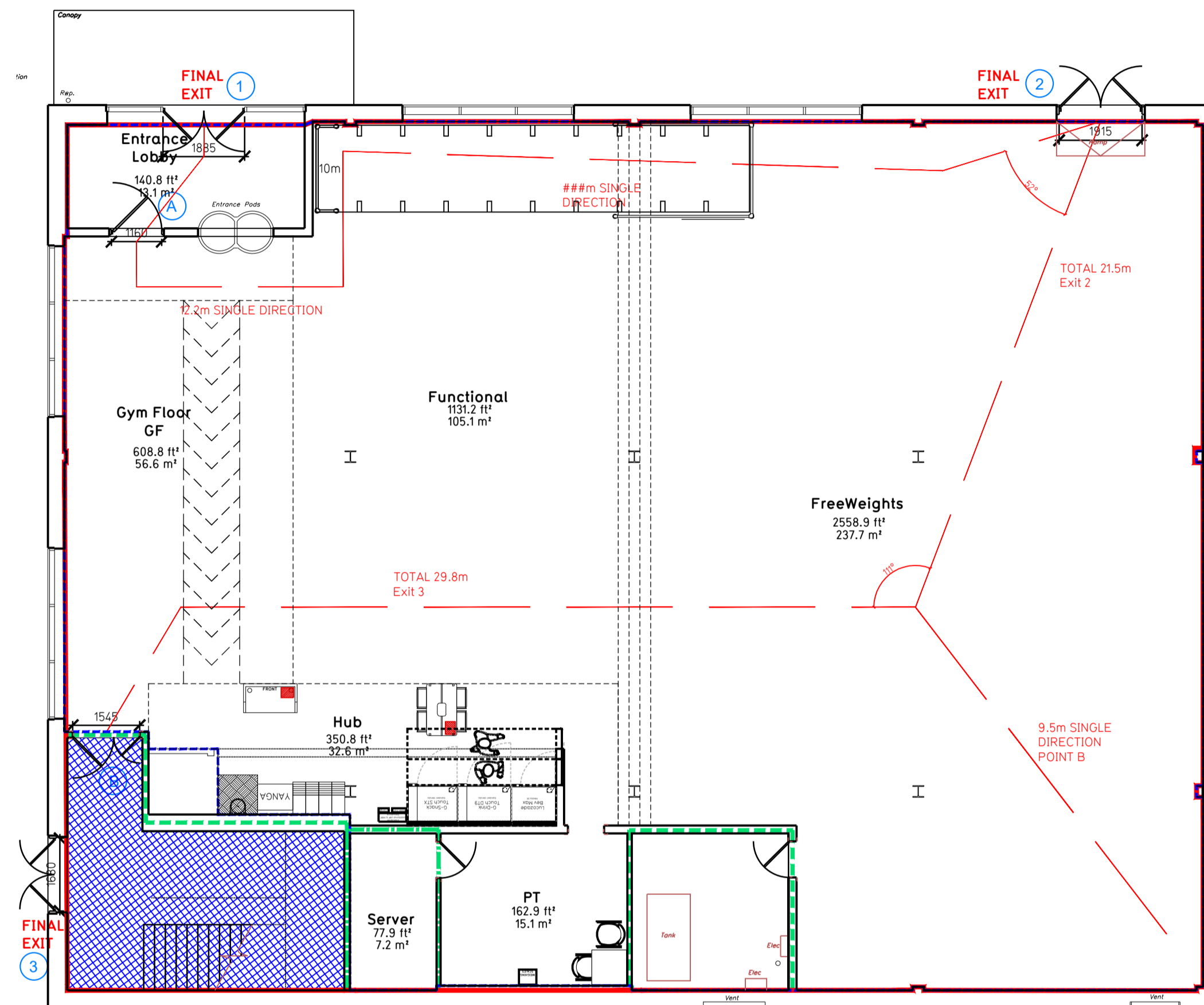
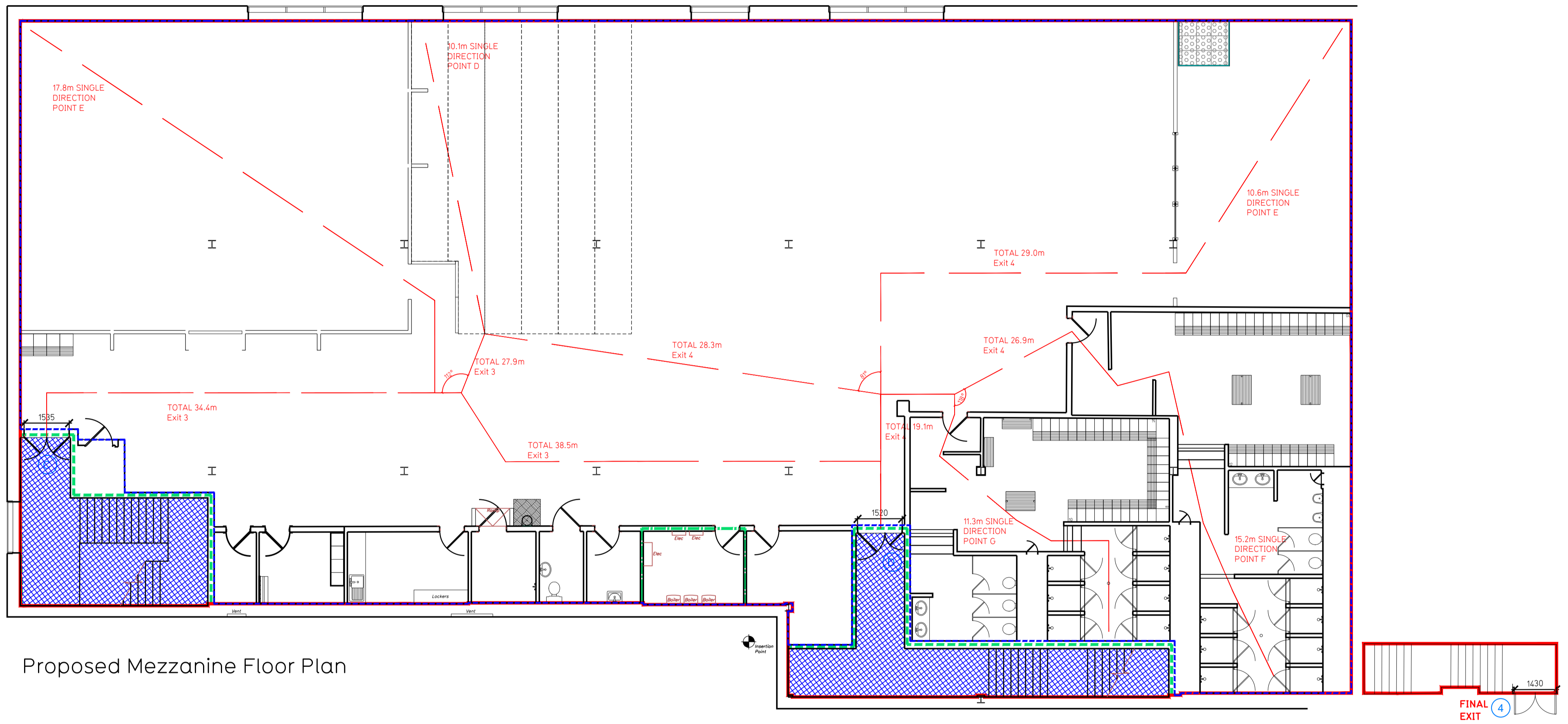


NOTE:

- Proposals must comply with all acoustic, fire & building regulation requirements
- No dimensions are to be scaled from this drawing. The contractor is responsible for checking all dimensions on site

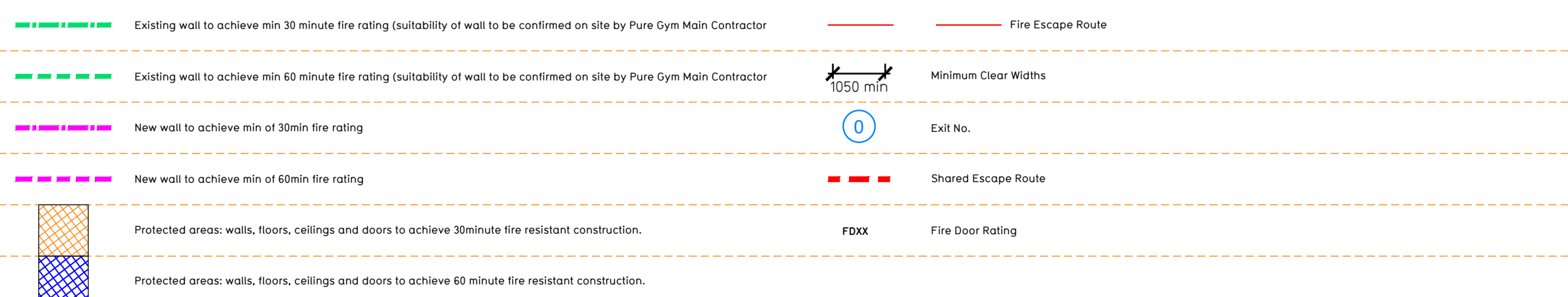


Proposed Ground Floor Plan



Proposed Mezzanine Floor Plan

Fire Evacuation Key



**Escape Route Widths:**  
 In line with Sections 3.21 & 3.22 of 'Approved Document Part B, Volume 2 - buildings other than dwellings' - the adjacent calculations provide justification for the clear opening widths for escape from each floor/room in accordance with Table 4 & Appendix C.

**Ground Floor**  
 Final Exit 1 limited by Storey Exit A Clear Opening Width = 160mm (allows 242 persons to escape)  
 Final Exit 2 Clear Opening Width = 195mm (allows 393 persons to escape, largest opening to be discounted)  
 Final Exit 3 limited by Storey Exit B = 154mm (allows 279 persons to escape, largest opening to be discounted)  
 Total Aggregate Width for Floor (Less Largest Opening Width of 195mm from Final exit 2 = 2705mm)

**Mezzanine Floor**  
 Final Exit 3 limited by Storey Exit C Clear Opening Width = 135mm (allows 317 persons to escape, largest opening to be discounted)  
 Final Exit 4 limited by Storey Exit D Clear Opening Width = 1520mm (allows 316 persons to escape)  
 Total Aggregate Width for Floor (Less Largest Opening Width of 1520mm from Final exit 3 = 1520mm)

**Total**  
 Ground Floor = 561 persons to escape  
 Mezzanine = 317 persons to escape  
**Total = 878 persons to escape**

Based on N/A of 14936sqft, the Puregym Peak Occupancy Target = 226 persons  
 Calculated using the Puregym Fire Safety Occupancy Levels Forecast Tool.

The existing of the unit as calculated would allow a max. No. of 878 persons to escape, which is larger than the total estimated occupancy capacity of 226 persons and is therefore, thought to meet the Approved Document Part B.

**Sprinklers**  
 System design and installed in compliance with BS EN 12845:2015 & LPC Technical Bulletins

**Fire Alarm**  
 Fire alarm designed and installed to BS 5839. Smoke & heat detection / emergency lighting by specialist. Please refer to MSE engineer's drawings / specifications.

**Escape Lighting**  
 Emergency escape lighting designed and installed in accordance with BS 5266: Part 1. Please refer to MSE Engineer's drawings for final layout and specification.

**Smoke Extract**  
 Smoke Extract System to be designed and installed in accordance with BS 7346: Part 8. Please refer to MSE Engineer's drawings for final layout and specification.

Escape Signage and emergency lighting is CDP under the MSE specification. Details of contractors proposals to be provided to Building Control Approved Inspector and Fire Officer within the Contractors Proposals Package, Clause 14.

CO0	30.05.23	ISSUED FOR CONSTRUCTION	KMC/WLT
T00	20.04.23	Issued for Tender	KMC/WLT
Rev	Date	Description	Drawn/Checked
PROJECT TITLE		DRAWING TITLE	
Reading Basingstoke Rd 350 Basingstoke Rd, Reading, RG2 0NT		Fire Evacuation Plan Ground and Mezzanine Floor Plans	
DRAWN BY	DATE	SCALE	DRAWING No.
KMC/WLT	03.03.23	1:100 @ A1	0058
DRAWING PURPOSE	REV	NO	003-FEP
CONSTRUCTION		CO0	

**PUREGYM**

Pure Gym Ltd  
 Town Centre House  
 The Merrion Centre  
 Leeds  
 LS2 9LY  
 e: architecture@puregym.com  
 t: 0113 285 8787  
 w: www.puregym.com