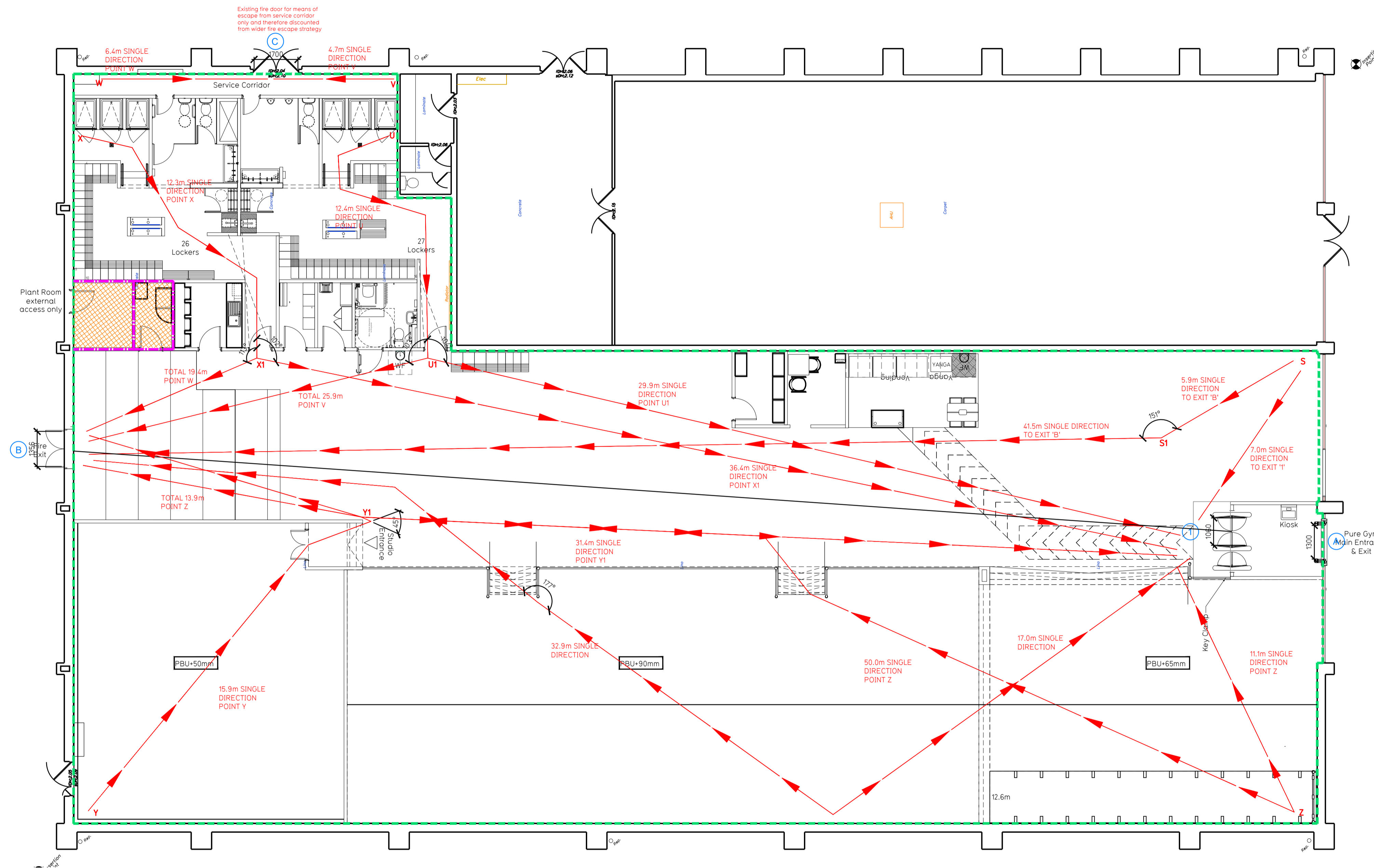
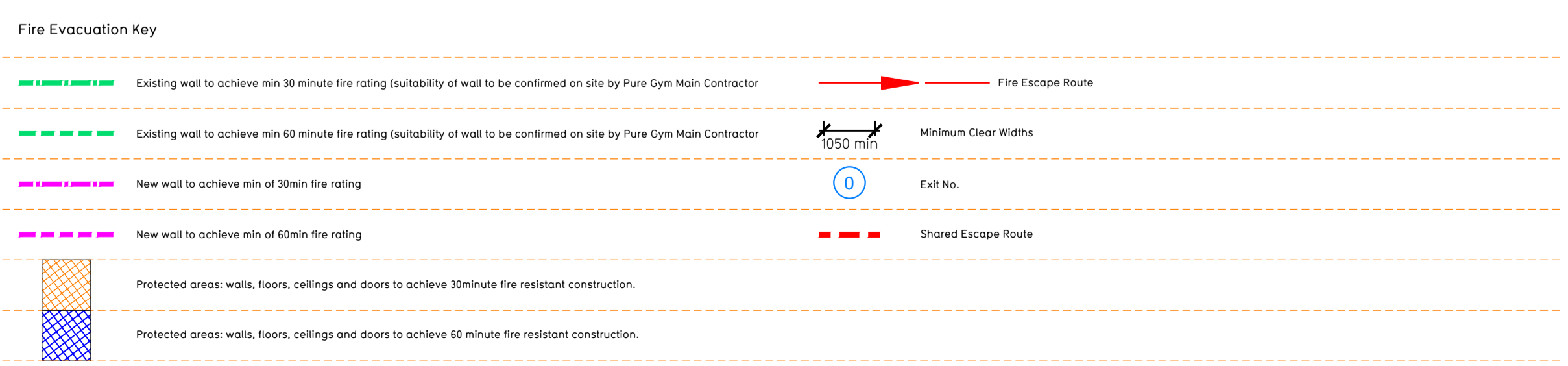


NOTE:

- Proposals must comply with all acoustic, fire & building regulation requirements
- No dimensions are to be scaled from this drawing. The contractor is responsible for checking all dimensions on site



Proposed Ground Floor Plan



Escape Route Widths:
 In line with Sections 3.21 & 3.22 of 'Approved Document Part B, Volume 2 - buildings other than dwellinghouses' - the adjacent calculations provide justification for the clear opening widths for escape from each floor level/ room in accordance with Table 4 & Appendix C.

Ground Floor
 Exit A Clear Opening Width • 1060mm (allows 222 persons to escape, limited by clear width of Exit Not)
 Exit B Clear Opening Width • 1356mm (allows 281 persons to escape)
 Exit C Clear Opening Width • 1100mm (allows 350 persons to escape, largest opening to be discounted)

Ground Floor Total Estimated Occupancy Capacity = 183 Persons
 Exit A and Exit C provides a combined escape capacity of 503 persons, which is larger than the total estimated occupancy capacity of 183 Persons and is therefore thought to meet with the Approved Document Part B.

Fire Alarm
 Fire Alarm designed and installed to BS 5839. Smoke & heat detection / emergency lighting by specialist. Please refer to M&E engineer's drawings / specifications.

Escape Lighting
 Emergency escape lighted designed and installed in accordance with BS 5266: Part 1. Please refer to M&E Engineer's drawings for final layout and specification.

Escape Signage and emergency lighting is CDP under the M&E specification. Details of contractors proposals to be provided to Building Control Approved Inspector and Fire Officer within the Contractors Proposals Package, Clause 14.

T01	31.10.22	Acoustic Floor Build ups to Free Weights, Functional & Studio. Door added to Studio.	HI/NA
Rev	Date	Description	Drawn/ Checked
PROJECT TITLE		DRAWING TITLE	
Dover (Halwards)		Fire Evacuation Plan	
24 Granville Street, Dover CT16 2LG		Ground Floor Plan	
DRAWING NO.	DATE	SCALE	ISSUE NO.
MJ/JIN/T's	25.08.22	1:100 @ A1	2009
DRAWING PURPOSE			DRAWING No.
TENDER			003-FEP
			Rev
			T01

Pure Gym Ltd
 Town Centre House
 The Merrion Centre
 Leeds
 LS2 8LY
 e: architecture@puregym.com
 t: 0113 285 8787
 w: www.puregym.com