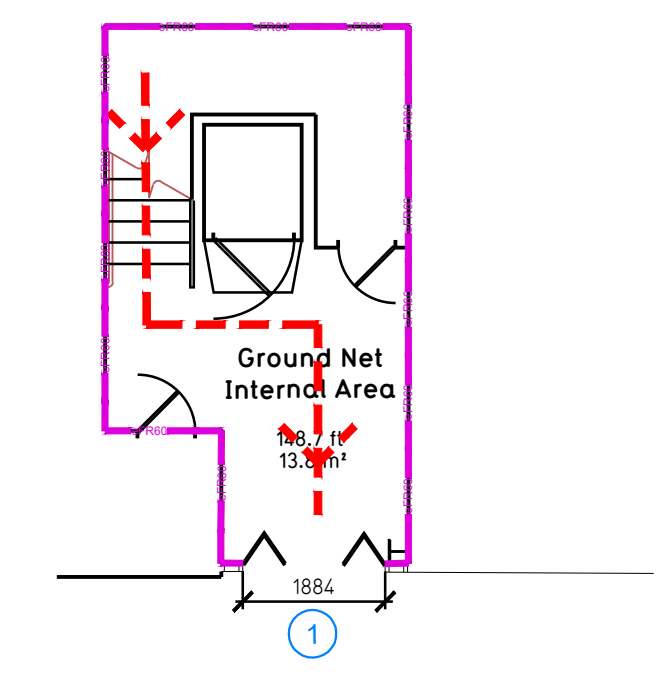
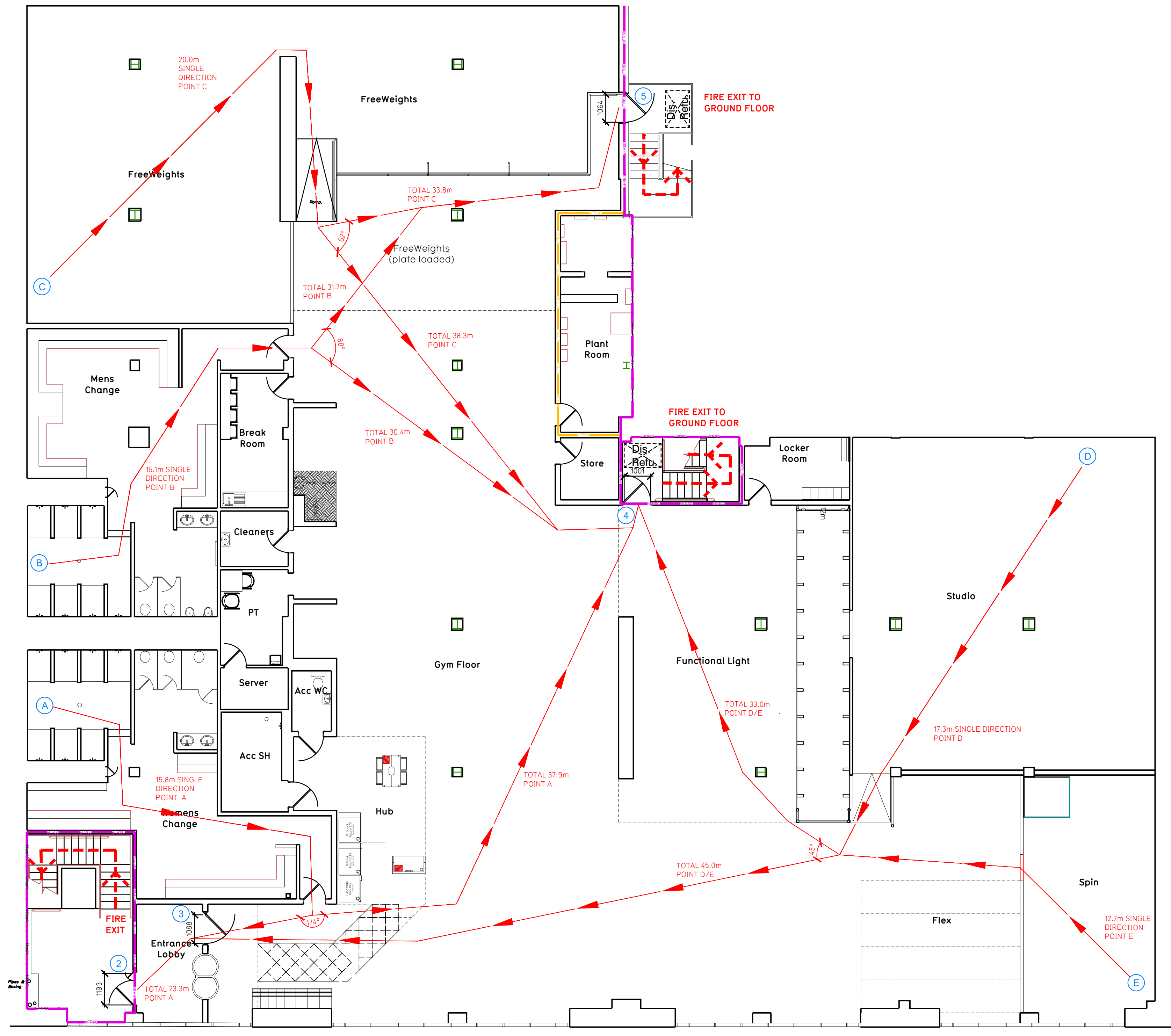


NOTE:

- Proposals must comply with all acoustic, fire & building regulation requirements
- No dimensions are to be scaled from this drawing. The contractor is responsible for checking all dimensions on site



Proposed First Floor Plan

Proposed Ground Floor Plan

Fire Evacuation Key

	Existing wall to achieve min 30 minute fire rating (suitability of wall to be confirmed on site by Pure Gym Main Contractor)		Fire Escape Route
	Existing wall to achieve min 60 minute fire rating (suitability of wall to be confirmed on site by Pure Gym Main Contractor)		Minimum Clear Widths
	New wall to achieve min of 30min fire rating		Exit No.
	New wall to achieve min of 60min fire rating		Shared Escape Route
	Protected areas: walls, floors, ceilings and doors to achieve 30minute fire resistant construction.		Fire Door Rating
	Protected areas: walls, floors, ceilings and doors to achieve 60 minute fire resistant construction.		

Escape Route Widths:
In line with Sections 3.21 & 3.22 of 'Approved Document Part B, Volume 2 - buildings other than dwellings' - the adjacent calculations provide justification for the clear opening widths for escape from each floor level / room in accordance with Table 4 & Appendix C.

Ground Floor
Exit 1 Clear Opening Width = 1184mm, but restricted by First Floor Exit 3 (1088mm clear opening width) at First Floor (allows 227 persons to escape from First Floor)

First Floor
Exit 2 Clear Opening Width = 1193mm, but restricted by Exit 3 (1088mm clear opening width) (allows 227 persons to escape, largest opening to be discarded)
Exit 4 Clear Opening Width = 1000mm (allows 110 persons to escape)
Exit 5 Clear Opening Width = 1064mm (allows 223 persons to escape)

Based on the Net Internal Area of 13,528m², the Pure Gym peak occupancy tool = 222 persons. Calculated using the Pure Gym Fire Safety Occupancy Levels Forecast Tool.

The existing unit design would allow a max. No. of 333 persons to escape, which is larger than the total estimated occupancy capacity of 222 persons and is therefore thought to meet with the Approved Document Part B.

Note = Existing Fire Exits within gym are to be maintained. The refurbishment proposes no alterations to existing escape door clear opening widths.

Fire Alarm
Fire Alarm designed and installed to BS 5839. Smoke & heat detection / emergency lighting by specialist. Please refer to MSE engineer's drawings / specifications.

Escape Lighting
Emergency escape lighted designed and installed in accordance with BS 5266: Part 1. Please refer to MSE Engineer's drawings for final layout and specification.

Escape Signage and emergency lighting is CDP under the MSE specification. Details of contractors proposals to be provided to Building Control Approved Inspector and Fire Officer within the Contractors Proposals Package, Clause 14.

Rev	Date	Description	Drawn/Checked

PROJECT TITLE
London Orpington - Refurb
Walnuts Shopping Centre, BR6 0TW

DRAWING TITLE
Fire Evacuation Plan
Ground and First Floor Plans

DRAWN BY	DATE	SCALE	REV	DRAWING No.
OT/HB	11.09.23	1:100 @ A1	0050	003-FEP

DRAWING PURPOSE
CONSTRUCTION

Rev
C00

PUREGYM

Pure Gym Ltd
Town Centre House
The Merrion Centre
Leeds
LS2 8LY

e: architecture@puregym.com
t: 0113 285 8787
w: www.puregym.com