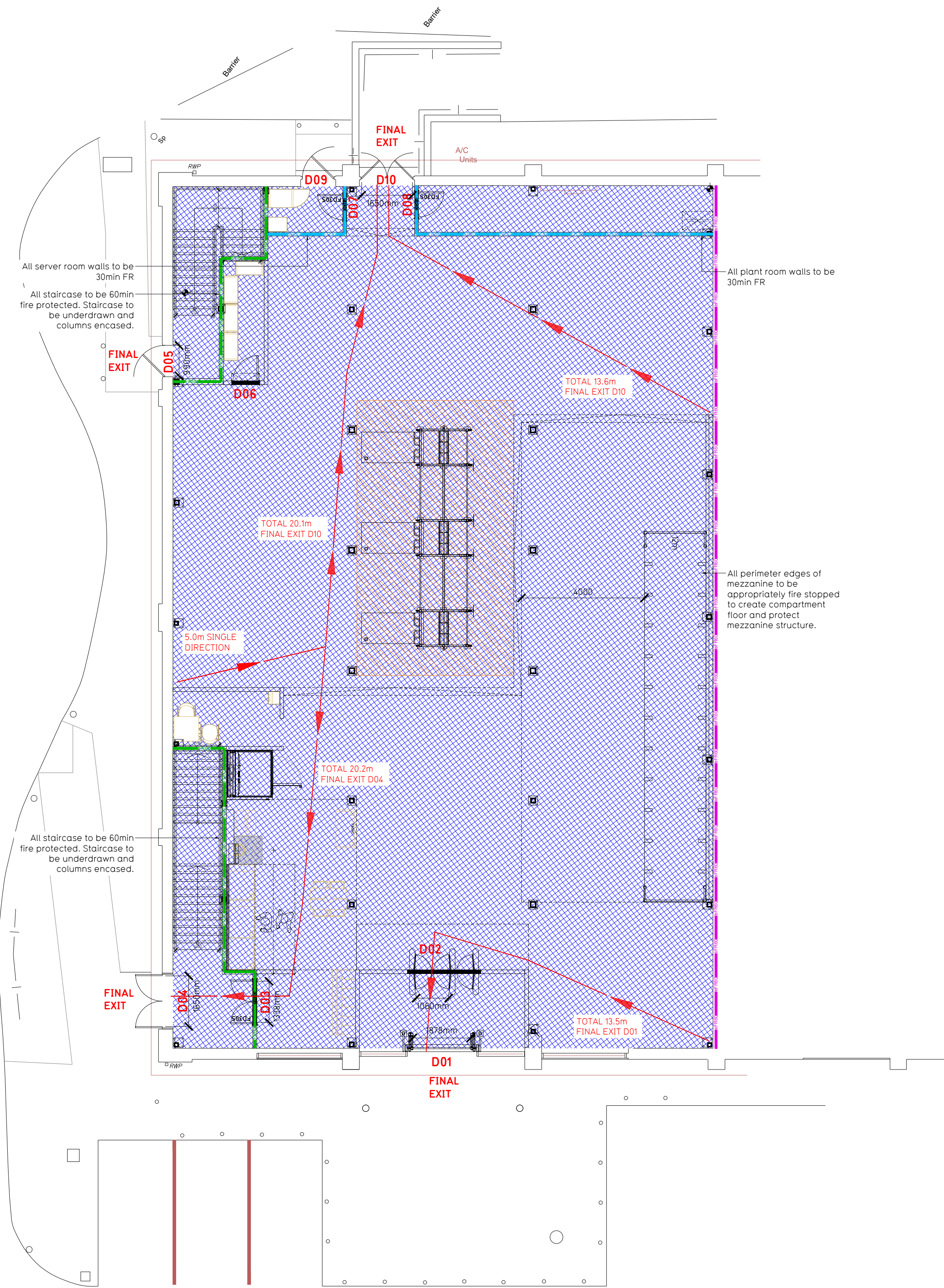
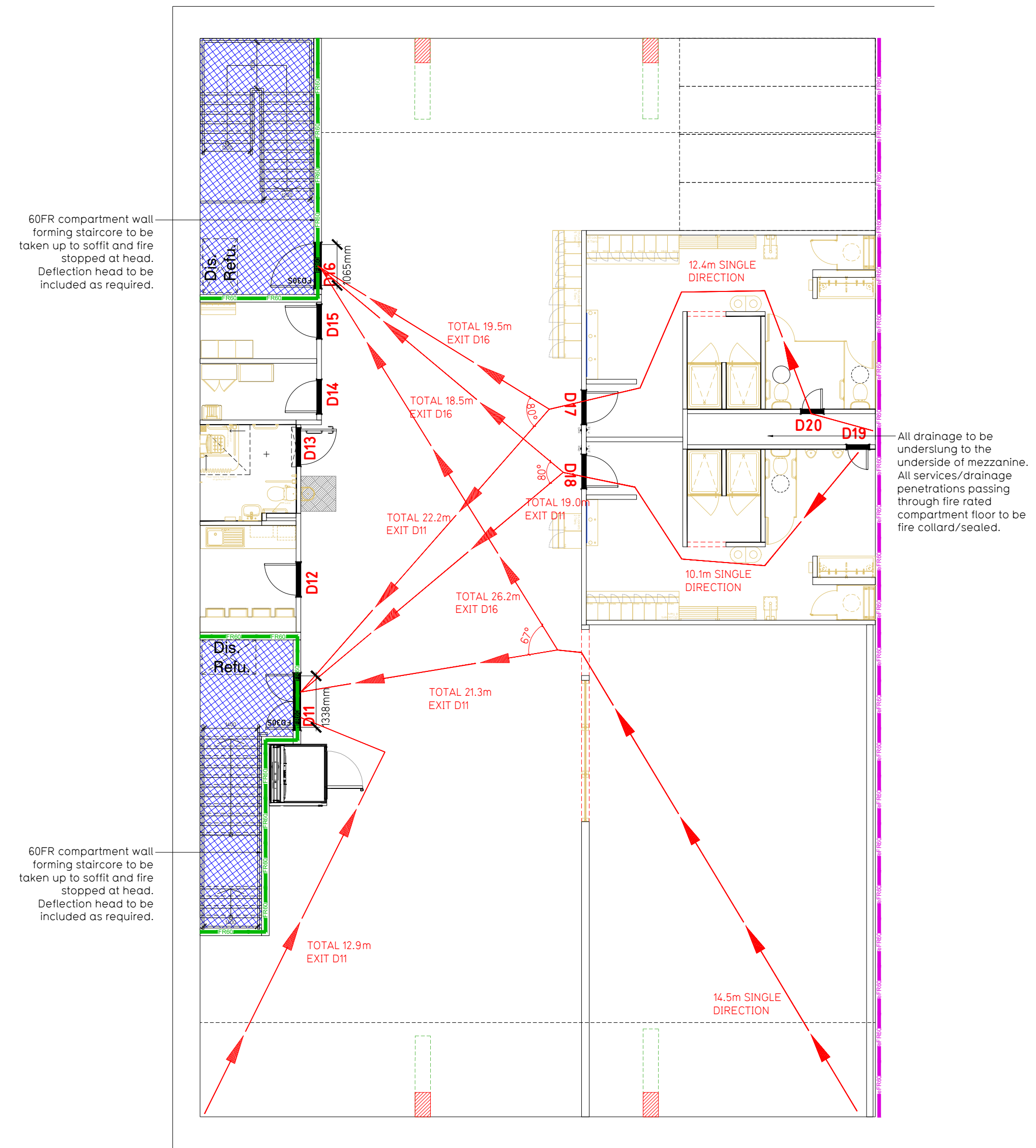


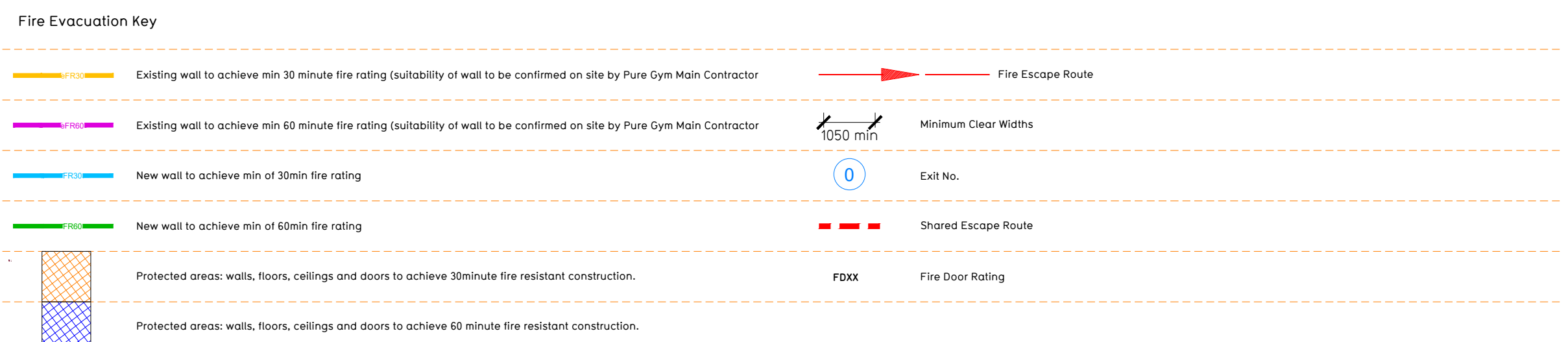
- NOTE:
- Proposals must comply with all acoustic, fire & building regulation requirements
  - No dimensions are to be scaled from this drawing. The contractor is responsible for checking all dimensions on site



Proposed Ground Floor Plan



Proposed Mezzanine Floor Plan



**Escape Route Widths:**  
 In line with Sections 3.21 & 3.22 of 'Approved Document Part B, Volume 2 - buildings other than dwellings' - the adjacent calculations provide justification for the clear opening widths for escape from each floor level/ room in accordance with Table 4 & Appendix C.

**Ground Floor**  
 Final Exit D01 limited by Storey Exit D02 Clear Opening Width = 1066mm (allows 227 persons to escape)  
 Final Exit D04 limited by Storey Exit D03 Clear Opening Width = 1338mm (allows 110 persons to escape, limited by merging flow)  
 Final Exit D05 Clear Opening Width = 930mm (allows 34 persons to escape, largest opening to be discounted)

**Mezzanine Floor**  
 Final Exit D04 limited by Storey Exit D01 Clear Opening Width = 1338mm (allows 277 persons to escape, largest opening to be discounted)  
 Storey Exit D06 limited by Final Exit D05 Clear Opening Width = 930mm (allows 110 persons to escape)

The Main stair core has a merging flow from the Mezzanine and Ground floors and therefore, W=(N/2.5) + (60S) / 80 must be used. If N is (on door D04) is limited to 110 people and S is 1.4m, then W = 1600mm clear door. The distance from the Ground floor storey exit (D03) is more than the minimum 2M.

Based on MIA of 973sech, the Puregym max peak occupancy target = 153 persons  
 Calculated using Puregym Fire Safety Occupancy Levels Forecast Tool.  
 The designed occupancy of the unit as calculated would allow a max. No. of 442 persons, which is larger than the total estimated occupancy target of 153 persons and is therefore thought to meet with the Approved Document Part B. To allow free movement between the floors the occupancy has not been split 50/50% but rather allows for occupancy based on gym stations and function assuming that a high percentage of the total occupancy could be on a single floor at one time.

**Fire Alarm**  
 Fire Alarm designed and installed to BS 5839. Smoke & heat detection / emergency lighting by specialist. Please refer to M&E engineer's drawings & specifications.

**Escape Lighting**  
 Emergency escape lighted designed and installed in accordance with BS 5266: Part 1. Please refer to M&E Engineer's drawings for final layout and specification.

**Fire Stopping**  
 All perimeter edges of mezzanine to be appropriately fire stopped to create compartment floor and protect mezzanine structure. All services/drainage penetrations passing through fire rated compartment floor to be fire collared/sealed.

**Mezzanine**  
 Mezzanine Design CDP: New mezzanine structure including deck and column connections to be min 60min FR using a boarded solution. Ceiling to be clear and flat ready to receive decoration. Service penetrations to be coordinated and suitably fire rated. Contractor to submit proposals for design to be reviewed by building control and fire service. Escape Signage and emergency lighting is CDP under the M&E specification. Details of contractor proposals to be provided to Building Control Approved Inspector and Fire Officer within the Contractors Preposals Package, Clause 14

Rev	Date	Description	DRAWING TITLE	Drawn/ Checked
<b>PROJECT TITLE</b>				
Llantrisant Unit 12, Talbot Green RP, Llantrisant, CF72 8LW			Fire Evacuation Plan Ground and Mezzanine Floors	
<b>DRAWING RECORD</b>				
DATE	SCALE	NO.	REVISED BY	DRAWING NO.
26.10.23	1:100 @ A1	2194		003-FEP
<b>DRAWING PURPOSE</b>				
CONSTRUCTION				Rev
				C00
Pure Gym Ltd Town Centre House The Merrion Centre Leeds LS2 8LY e: architecture@puregym.com t: 0113 285 8787 w: www.puregym.com				